

DEPARTMENT OF THE ARMY TECHNICAL MANUAL

---

OPERATOR'S AND ORGANIZATIONAL MAINTENANCE  
REPAIR PARTS AND SPECIAL TOOLS LIST  
RADIO SET CONTROL GROUP OA-1754/GRC  
FSN 5820-752-0894

---

Headquarters, Department of the Army, Washington, D.C.  
23 April 1973

---

Current as *of November 1973*

	Paragraph	Page
Section I. INTRODUCTION		
Scope	1-1	2
General	1-2	2
Explanation of columns	1-3	2
Special information	1-4	4
Location of repair parts	1-5	4
Abbreviations( Not applicable:	1-6	4
Reporting of equipment manual improvements	1-7	4
Items comprising an operable equipment	1-8	4
II. BASIC ISSUE ITEMS LIST (Not applicable)		
III. ITEMS TROOP INSTALLED OR AUTHORIZED LIST (Not applicable,		
IV. PRESCRIBED LOAD ALLOWANCE (Not applicable)		
V. REPAIR PARTS LIST		6
VI. SPECIAL TOOLS. TEST AND SUPPORT EQUIPMENT (Not applicable)		
VII. INDEX-FEDERAL STOCK NUMBER AND REFERENCE NUMBER CROSS-REFERENCE TO FIGURE AND ITEM NUMBER		7

---

\*This manual • supersedes TM 11-5820-389-12P. 29 August 1960.

# SECTION I

## 1-1. Scope

This manual lists basic issue items, items troop installed or authorized, repair parts, and special tools required by the crew/operator for operation and required for the performance of organizational maintenance of the OA-1754/GRC. The PCCN for the OA-1754/GRC is GCRAAO for all models.

## 1-2. General

This basic issue items, items troop installed or authorized, repair parts, and special tools list is divided into the following sections-

a.. *Basic Issue Items List - Section II.* Not applicable.

b. *Items Troop Installed or Authorized List - Section III.* Not applicable.

c. *Prescribed Load Allowance (PLA) - Section IV.* Not applicable.

d. *Repair Parts List - Section V.* A list of repair parts authorized for the performance of maintenance at the organizational level. This repair parts list is arranged in alphabetical order.

e. *Special Tools, Test and Support Equipment-Section VI.* Not applicable.

f. *Index-Federal Stock Number and Reference Number Cross-Reference to Figure and Item Number - Section VII.* A list, in ascending numerical sequence, of all Federal stock numbers appearing in the listings, followed by a list, in alphameric sequence, of all reference numbers appearing in the listings. Federal stock number and reference numbers are cross-referenced to each illustration figure and item number or reference designation appearance.

## 1-3. Explanation of Columns

The following provides an explanation of columns found in the tabular list.

a. *Source, Maintenance, and Recoverability Codes (SMR).*

(1) Source code. Indicates the source for the listed items. Source codes are-

Code	Explanation
P -	Repair parts, special tools and test equipment supplied from the GSA/DSA or Army supply system and authorized for use at indicated maintenance categories.

Code	<i>Explanation</i>
P 2 -	Repair parts, special tools and test equipment which are procured and stocked for insurance purposes because the combat or military essentiality of the end item dictates that a minimum quantity be available in the supply system.
P 9 -	Assigned to items which are NSA design controlled: unique repair parts, special tools, test, measuring, and diagnostic equipment which are stocked and supplied by the Army COMSEC Logistic System and which are not subject to the provisions of AR 380-41.
P10-	Assigned to items which are NSA design controlled: special tools, test, measuring, and diagnostic equipment for COMSEC support which are accountable under the provisions of AR 380-41 and which are stocked and supplied by the Army COMSEC Logistic System.
M -	Repair parts, special tools and test equipment which are not procured or stocked as such in the supply system but are to be manufactured at indicated maintenance levels
A -	Assemblies which are not procured or stocked as such but are made up of two or more units. Such component units carry individual stock numbers and descriptions, are procured and stocked separately, and can be assembled to form the required assembly at indicated maintenance categories.
X -	Parts and assemblies that are not procured or stocked because the failure rate is normally below that of the applicable end item or component. The failure of such part or assembly should result in retirement of the end item from the supply system.
X1 -	Repair parts which are not procured or stocked. The requirement for such items will be filled by the next higher assembly or component.

<i>Code</i>	<i>Explanation</i>
x 2 -	Repair parts, special tools <b>and test equipment</b> which are not <b>stocked and have no</b> foreseen mortality. The indicated maintenance category requiring such repair parts will attempt to obtain the parts through cannibalization or salvage. The item may be requisitioned, with exception data, from the end item manager for immediate use.
G -	Major assemblies that are procured with PEMA funds for initial issue only as exchange assemblies at DS and GS level. These assemblies will not be stocked above DS and GS level or returned to depot supply level.

**NOTE**

Cannibalization or salvage may be used as a source of supply for any items. source coded above except those coded XI and aircraft support items as restricted by AR 700-42.

(2) Maintenance code. indicates the lowest category of maintenance authorized to install the listed item. Capabilities of higher maintenance categories are considered equal or better. Maintenance codes are -

<i>Code</i>	<i>Explanation</i>
	. Crew/operator
O . . . . .	Organizational maintenance
F . . . . .	Direct support maintenance
H . . . . .	General support maintenance
D . . . . .	Depot maintenance

(3) Recoverability code. Indicates whether un-serviceable items should be returned for recovery or salvage. Items not coded are conrecoverable. Recoverability codes are -

<i>Code</i>	<i>Explanation</i>
R -	Repair parts (assemblies and components), special tools and test equipment which are considered economically reparable at direct and general support maintenance levels. When the item is no longer economically reparable, it is normally disposed of at the GS level. When supply considerations dictate, some of these repair parts may be listed for automatic return to supply for depot level repair as set forth in AR 710-1. When so listed, they will be replaced by supply on an exchange basis.
S -	Repair parts, special tools and test equipment, and assemblies which are economically reparable at DS and GS activities and which normally are furnished by supply on an exchange basis. When items are determined by a GSU to be uneconomical-

<i>code</i>	<i>Explanation</i>
	ly reparable, they will be evacuated to a depot for evaluation and analysis before final disposition.
T -	High dollar value recoverable repair parts, special tools and test equipment which are subject to special handling and are issued on an exchange basis. Such items will be repaired or overhauled at depot maintenance activities only. No repair may be accomplished at lower levels.
U -	Repair parts, special tools and test equipment specifically selected for salvage by reclamation units because of precious metal content, critical materials, high dollar value, or reusable casings or castings.

*b. Federal Stock Number.* Indicates the Federal stock number assigned to the item and will be used for requisitioning purposes.

*c. Description.* Indicates the Federal item name and a minimum description required to identify the item. The last line indicates the reference number followed by the applicable Federal Supply Code for Manufacturer (FSCM) in parentheses. The FSCM is used as an element in item identification to designate manufacturer or distributor or Government agency, etc., and is identified in SB 708-42.

*d. Unit of Measure (U/M).* Indicates the standard or basic quantity by which the listed item is used in performing the actual maintenance function. This measure is expressed by a two-character alphabetical abbreviation, e.g., ea, in, pr, etc., and is the basis used to indicate quantities and allowances in subsequent columns. When the unit of measure differs from the unit of issue, the lowest unit of issue that will satisfy the required units of measure will be requisitioned.

*e. Quantity Furnished with Equipment (Basic Issue Items Only).* Not applicable.

*f. Quantity Authorized (Items Troop Installed or Authorized Only).* Not applicable.

*g. Quantity Incorporated in Unit.* This column indicates the quantity of the item used in the equipment.

*h. 15-Day Organizational Maintenance Allowance.*

(1) The repair parts indicated by an asterisk in the allowance column represent those authorized for use at the organizational category), and will be requisitioned on an "as required" basis, until stockage is based on demand in accordance with AR 710-L.

(2) Major Army commanders are authorized to approve redaction in the range of support items authorized for use in units within their commands. Recommendations for increase in range of items authorized for use will be forwarded to the Com-

manding General, US Army Electronics Command, ATTN: AMSEL-MA-CR, Fort Monmouth, N.J., 07703.

(3) Allowance quantities are indicated in the special tools list section for special tools, TMDE, and other support equipment.

i. Illustration. Not applicable.

#### 1-4. Special Information

a. Usable on codes are included in column 3. Uncoded items are applicable to all models. Identification of the usable on codes used in this publication are -

code  
AC5

Used on  
OA-1754/GRC

b. The following publications pertain to the OA-1754/GRC and its components-

TM 11-5820-335-10 Operator's Manual: Transmitters, Radio T-195/GRC-19, T-195A/GRC-19, and T-195B/GRC-19.

TM 11-5820-335-20 Organizational Maintenance Manual: Transmitter, Radio T-195/GRC-19, T-195A/GRC-19, and T-195B/GRC-19.

TM 11-5820-335-20P Organizational Maintenance Repair Parts and Special Tool Lists: Transmitter Radio T-195/GRC-19, T-195A/GRC-19, and T-195B/GRC-19.

#### 1-5. Location of Repair Parts

a. This manual contains one cross reference index (sec VII) to be used to locate a repair part when either the Federal stock number or reference number (manufacturer's part number) is known. The first column in the index is prepared in numerical or alphanumeric sequence in ascending order. The reference numbers (manufacturer's part numbers) are

listed immediately following the last listed Federal stock number in the index of Federal stock numbers.

b. When the Federal stock number or reference number is known, follow the procedures given in (1) and (2) below.

(1) Refer to the index of Federal stock numbers (sec VII), and locate the Federal stock number or reference number. The FSN and reference number are cross-referenced to the applicable figure and item number or reference designation,

(2) Refer to the repair parts list (sec V) and locate the figure number (col 7a) and item number or reference designation (col 7b) as noted in the FSN index.

c. When the figure and item number or reference designation are known, scrutinize columns 7a and 7b, of the repair parts list (sec V) until the item is located.

d. When the FSN, reference number, figure number, and item number are not known, scrutinize column 3 of the repair parts list (sec V), which is arranged in alphabetical order.

#### 1-6. Abbreviations

Not applicable.

#### 1-7. Reporting of Equipment Manual Improvements

The reporting of errors, omissions, and recommendations by improving this publication by the individual user is encouraged. Reports should be submitted on DA Form 2028 (Recommended Changes to Publications) and forwarded direct to Commander, US Army Electronics Command. ATTN: AMSEL-MA-CR, Fort Monmouth, N.J., 07703.

#### 1-8. Items Comprising An Operable Equipment

Relay Unit RE-479/GFC FSN 5320-777-3233 ( 1 ea )  
Switching Unit SA-708/GRC FSN 5820-777-3232 ( 1 ea )

(Next printed page is 6.)

SECTION V

TM11-5820-389-12P

(1) SMR CODE	(2) FEDERAL STOCK NUMBER	(3) DESCRIPTION REFERENCE NUMBER & MFR CODE      USABLE ON CODE		(4) UNIT OF MEAS	(5) QTY. INC IN UNIT	(6) 15-DAY ORGANIZATIONAL MAINTENANCE ALW				(7) ILLUSTRATION	
						(a)	(b)	(c)	(d)	(a)	(b)
						1-5	6-20	21-50	51-100	FIGURE NO.	ITEM NO.
P--0--	5920-814-5446	CAP, ELECTRICAL NO-REF-DESIG MOLDED BLACK..... PHENOLIC: 2674 (88243)		EA	1	*	*	*	*		
P--0--	5940-283-5393	SHIELD, BINDING POST NO-REF-DESIG RUBBER:..... SCC762021 (80063)		EA	1	*	*	*	*		
P--0--	5820-777-3233	RELAY UNIT RE-479/GRC NO-REF-DESIG..... RE479GRC (80058)		EA	1	*	*	*	*		
P--0--	5820-777-3232	SWITCHING UNIT SA-708/GRC NO-REF-DESIG..... SA708GRC (80058)		EA	1	*	*	*	*		

SECTION VII

T M 1 1 - 5 8 2 0 - 3 8 9 - 1 2 P

INDEX - FEDERAL STOCK NUMBER REFERENCE NUMBER  
CROSS-REFERENCE TO FIGURE AND ITEM NUMBER

STOCK NUMBER	FIGURE NO.	ITEM NO.	STOCK NUMBER	FIGURE NO.	ITEM NO.		
5820-777-3232			5920-814-5446				
5820-777-3233			5940-283-5393				
REFERENCE NO.	MFR CODE	FIG. NO.	ITEM NO.	REFERENCE NO.	MFR CODE	FIG. NO.	ITEM NO.
RE479GPC	80058			SCC762021	80063		
SA738CPC	80058			2674	88243		

By order of the Secretary of the Army:

CREIGHTON W. **ABRAMS**  
**General, United States Army**  
*Chief of Staff*

**Official:**

VERNE L. BOWERS

**Major General, United States Army**  
**The Adjutant General**

**Distribution:**

To be distributed in accordance with DA Form 12-51, (qty rqr block no. 854) Organizational maintenance requirements for OA-1754/GRC.

\*U.S. GOVERNMENT PRINTING OFFICE: 1973-769619/606

**END**

**11-26-82**

**DATE**

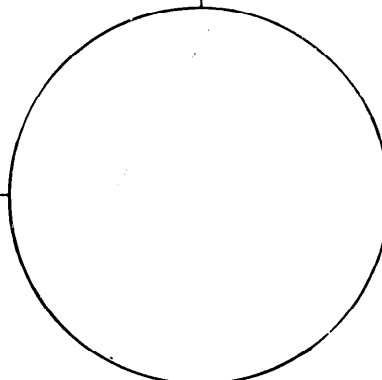
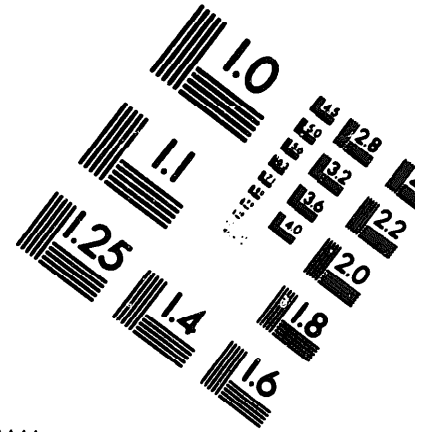
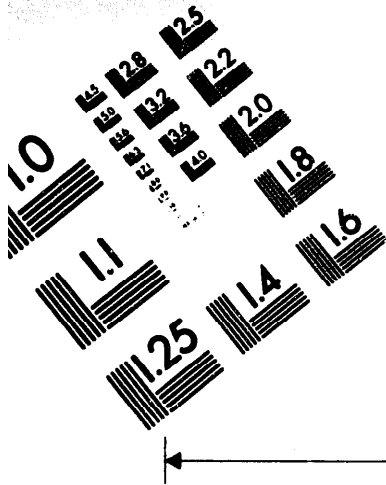






DEPARTMENT OF THE ARMY

MICROFORM TEST TARGET



150 MM

1.0 mm (e= .81 mm)

ABCDEFGHIJKLMNPOQRSTUVWXYZ1234567890  
abcdefghijklmnopqrstuvwxyz\$%&/'%# 1/2 1/4 3/4 —=+ x&@\*

1.5 mm (e= 1.09 mm)

ABCDEFGHIJKLMNPOQRSTUVWXYZ1234567890  
abcdefghijklmnopqrstuvwxyz\$%&/'%# 1/2 1/4 3/4 —=+ x&@\*

2.0 mm (e= 1.37 mm)

ABCDEFGHIJKLMNPOQRSTUVWXYZ  
abcdefghijklmnopqrstuvwxyz  
1234567890\$%&/'%# 1/2 1/4 3/4 —=+ x&@\*

2.5 mm (e= 1.77 mm)

ABCDEFGHIJKLMNPOQRSTUVWXYZ  
abcdefghijklmnopqrstuvwxyz  
1234567890\$%&/'%# 1/2 1/4 3/4 —=+ x&@\*

1.0 mm (e= .81 mm)

ABCDEFGHIJKLMNPOQRSTUVWXYZ1234567890  
abcdefghijklmnopqrstuvwxyz\$%&/'%# 1/2 1/4 3/4 —=+ x&@\*

1.5 mm (e= 1.09 mm)

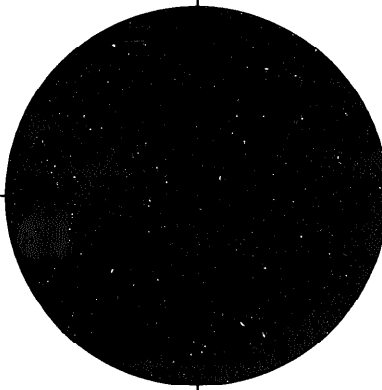
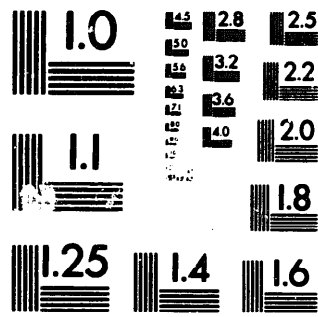
ABCDEFGHIJKLMNPOQRSTUVWXYZ1234567890  
abcdefghijklmnopqrstuvwxyz\$%&/'%# 1/2 1/4 3/4 —=+ x&@\*

2.0 mm (e= 1.37 mm)

ABCDEFGHIJKLMNPOQRSTUVWXYZ  
abcdefghijklmnopqrstuvwxyz  
1234567890\$%&/'%# 1/2 1/4 3/4 —=+ x&@\*

2.5 mm (e= 1.77 mm)

ABCDEFGHIJKLMNPOQRSTUVWXYZ  
abcdefghijklmnopqrstuvwxyz  
1234567890\$%&/'%# 1/2 1/4 3/4 —=+ x&@\*



200 MM

250 MM

